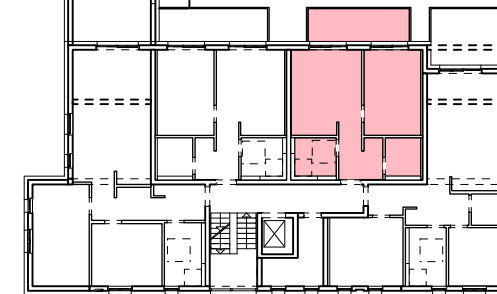
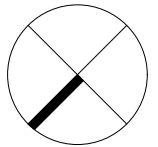
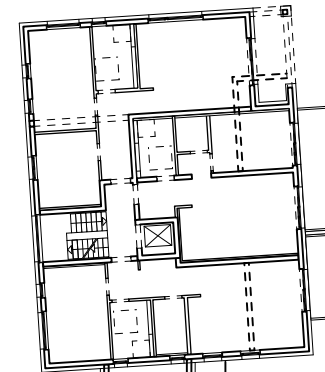
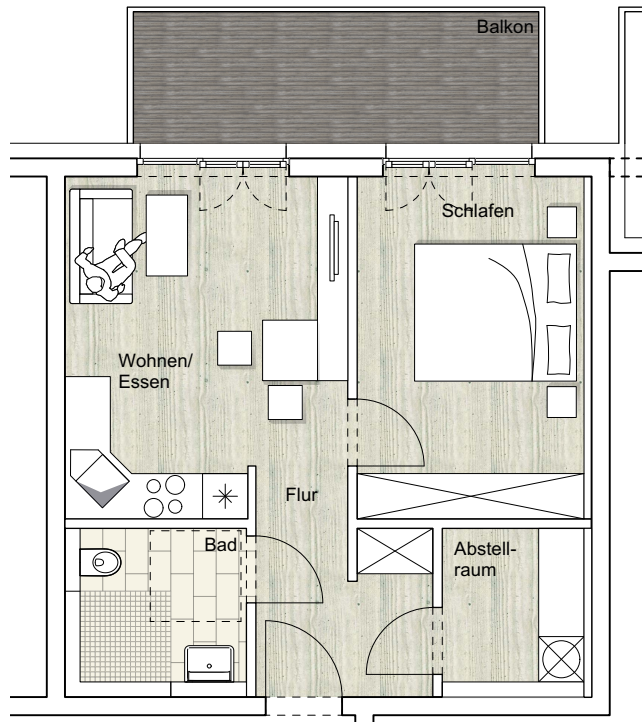


# Wohnhaus Heeserstraße 18

Wohnung 06

Maßstab: 1/100



Heeserstraße

Flur	6,10 m <sup>2</sup>
Abstellraum	3,80 m <sup>2</sup>
Bad	4,80 m <sup>2</sup>
Wohnen/Essen	16,30 m <sup>2</sup>
Schlafen	13,90 m <sup>2</sup>
Balkon	9,20 m <sup>2</sup> x 0,5 = 4,60 m <sup>2</sup>

<b>Wohnfläche</b>	<b>49,50 m<sup>2</sup></b>
-------------------	----------------------------

Grundriss OG

spandauer str. 36  
57072 siegen  
tel.: 0271/ 4 37 37  
fax.:0271/ 4 50 00



www.infra-plan.de  
info@infra-plan.de

